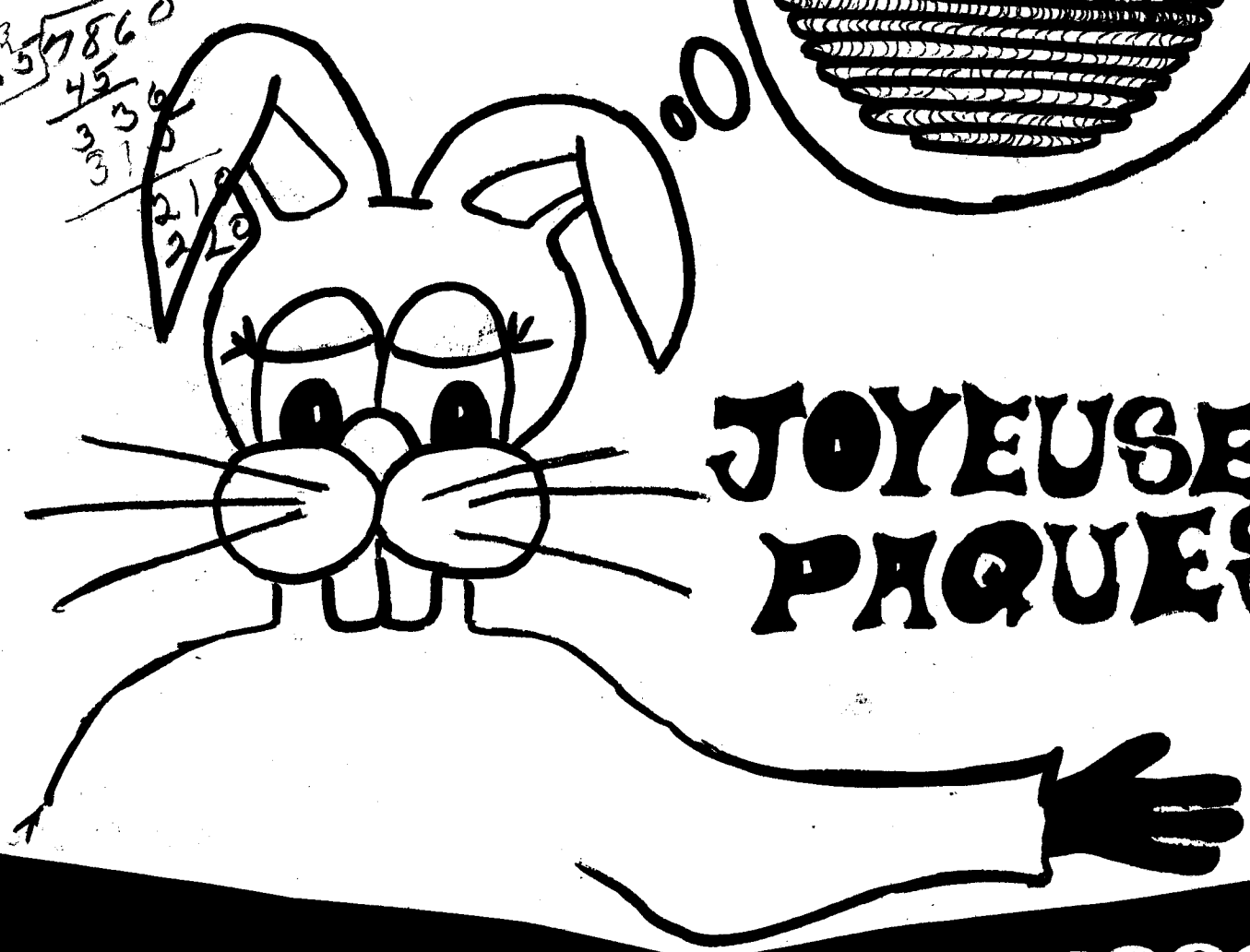
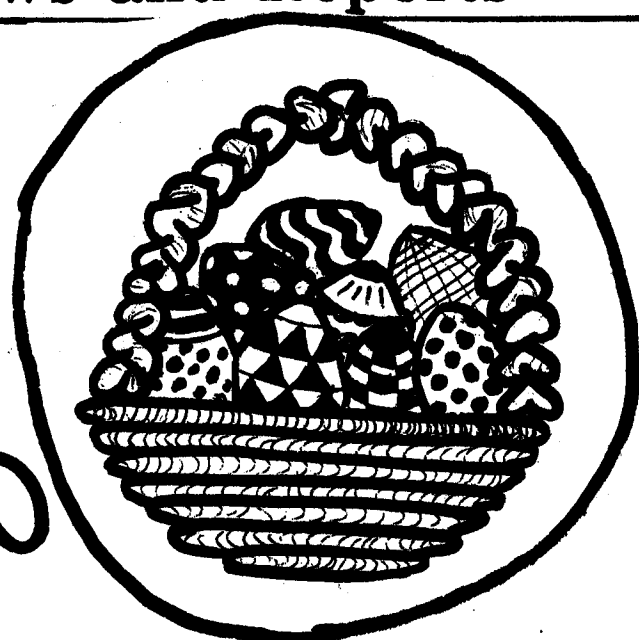


BANAR

Blackburn Area News and Reports

**HAPPY
EASTER!**

175
4.5 $\overline{)7860}$
45
336
331
229



**JOYEUSE
PAQUES!**

APRIL

1992

**BLACKBURN COMMUNITY ASSOCIATION
BOARD OF DIRECTORS MEETING MINUTES
February 20, 1992 , 7:30 PM**

Directors Present: Bob Jamieson, Colleen Stimpson, Jim Canning, Joan Grier, Steve Palmer, Jim Campbell and Michelle Therien

Guests: Marjorie Milloy - City of Gloucester Recreation Dept.

Correspondence

- The BCA received an acknowledgement letter with a Thank You note from the Pre-School for money received from the BCA for their 25th Anniversary celebration.
- The Blackburn Scouts sent a letter to the BCA to express their concerns and problems. The issue of regulating events for fundraising was pointed out to the BCA. After advertising in the BCA for a fundraising bottle drive, the Scouts association were preempted by another drive the day before. After discussion with the Board members, Bob will request that all groups advertise in the BANAR in advance of these events. The BCA is looking for cooperation and mutual support between groups. If this does not occur, then we may be forced to use other measures as leverage.
- The BCA received a late application from the Gloucester Skating Club for a grant. A request for a grant from the Gloucester Devils Junior A Ringette Team was also received to defray their costs for an out-of-town tournament.

Directors Reports:

President: The President reported on events since the last meeting related to Leisure Grant and City budget process(see below).

There were 2 special recognition events in the last month. The Annual Scout Sponsors Breakfast Meeting was attended by Bob and Colleen. Bob reported that the event was quite informative, and that the BCA received an Award to commemorate their 37 years of sponsorship. This will go into the library.

Joan and Bob represented the BCA at the Official Opening of the Gloucester Museum Collection & City Archives on February 13. As a sponsor of the Gloucester Historical Society's renovations, the BCA was congratulated and their name placed on a plaque on the Wall of Fame.

Bob noted that the BCA has not found a Chairman for this year's Fun Fair and that he will insert a late note in the Banar. A chairman must be found by the end of March for Fun Fair to proceed.

Membership: The membership drive has essentially completed. The numbers at this point are 6% less than last year, however Bob is confident that the BCA will make the difference during sports registrations, etc.

Sports:

Leisure Grant: Marjorie reported that the leisure grant from the City has been cut by 9.5% from the '91 per capita amount (i.e. now at \$3.80 per capita). The BCA specific information should be available before the 26th of March meeting.

At last month's meeting, Jim had proposed \$46,000 based on '91. The amount available now looks like \$42K-43K. Given the 10% cut proposed to all recipients, we foresee a break-even if there are no more late arrivals. It is expected that this per capita will be the new base going forward, and so it should be passed on to the user groups.

The President expressed his serious concern with the way the City handled the process. Specifically with the fact that 1) no consultation or notification was offered

in advance of the decision to cut, 2) that the Leisure Grant seemed to suffer a disproportionate cut, and that 3) the BCA was given incorrect information in regards to the dates for City Councils meeting's to approve the budget. He noted that he has spoken to the Mayor on these events, and that they demonstrate an approach diametrically opposite to the spirit of cooperation expressed in the Partners in Recreation philosophy espoused by the City.

Jim Canning reported on the Partners for Recreation activity. With the appointment of 2 new aldermen to the GRCB, this should become active again. The city staff/GRCB appear again to be attempting to exclude local groups from the decision process with a proposed new By-law. The BCA will follow-up via our alderman. We will also be meeting with other recreation groups in regards to the matter.

The signs for the baseball registration have also been posted.

Environment: The BCA expressed their full support for Jim Campbell's plans to actively pursue speaking engagements with local groups/schools on various environmental issues.

Jim noted that he is planning an environmental activity day for cleaning-up Greens Creek in the Spring near the beginning of April. Jim will write to the NCC for approval, and also co-ord with Steve with regards to involving Francon. Submission of a funding application to the Environmental Partners Fund (sponsored by the Environment Canada) and tie-in with the Canada 125 Program were also discussed. We should have a full status report by next meeting. Marjorie will review the plans with the City risk manager.

Jim noted that the Partner's Farm organization has now located land near Manotick.

Civic Affairs: Steve reported on some project developments in the Blackburn area. A new parking lot is planned for the Medical Building on Innes Road, a new side walk on Ridgeburn Gate, as well as one for part of Innes.

Steve also mentioned that he would be following up on the quarry tour in the spring. Due to the lull in construction, there has been little blasting

Youth: The St. Valentine's Youth dance scheduled at Ecole Ste Marie had to be cancelled because of the school was not open. The night custodian "had not been notified" of the permit for that night and, although contacted(with some difficulty), was unwilling to open the doors to the school. At least 75 kids, including the Disk Jockey, were stranded outside. Instead of being a fund-raising event for the Youth Drop-In, this will cost money. Colleen has requested a letter of apology to the community from the school principal.

There are still questions outstanding with Louis Riel as to why the permit to occupy the cafeteria was cancelled (Blackburn chorus confirmed that they are not using) and why the Youth Drop-In is entitled to only half the gymnasium while the other half is still vacant. Colleen is pursuing the matter, and the BCA will involve the school board, trustees, and City Council as required. This issue of lack of space is the major highlight of the quarterly report from the YM/YWCA on the operation of the Drop-In.

It was noted that City Council has approved the grant request for support to the Youth Drop-In.

Colleen noted that a new basketball group has started at the Glen Ogilvie School on Saturdays (mixed, age 13 and up). There were 12 participants for the first game

and the match was reported to be very exciting. There is always room for more players. The hours are from 12H30 to 2H30 PM and there is no charge.

Banar: Colleen noted that the Banar has not been delivered recently to local merchants, and that this will be rectified. She is also investigating alternative printers, as there seem to be cheaper options available.

New Business

It was suggested that the BCA consider changing its account from the Bank of Montreal to the TD because of more flexible hours, convenience, and greater apparent support for some community activities. This will be discussed with the treasurer.

ELECTIONS: Bob canvassed the members as to their intentions regarding remaining on the Executive for another year. He noted that, as stated in Sept, he will be stepping down as President. Bob has discussed the position with Jim Campbell, who has expressed interest and will make a decision by the end of March. All directors were requested to officially notify Bob of their decisions by the end of March, so that the positions can be advertised in the May BANAR.

There being no further business, the meeting was adjourned at 9:30 PM.

Next BCA Meetings: Thursday April 16, 7:30 PM, Glen Ogilvie P.S.
 Thursday May 21, 7:30 PM, Glen Ogilvie P.S. (Elections)

Bottle Drives in Blackburn

It has recently come to the attention of the Community Association that some group fund raising events in the Hamlet are conflicting (e.g. bottle drives scheduled too close together).

It would be preferable if all groups scheduled their events well in advance, and used the BANAR to advertise their plans. This would allow mutual planning between groups.

The BCA also suggests that Hamlet residents encourage this cooperation by contributing to the advertised events.

Blackburn Community Association



FROM YOUR PRESIDENT

Great news ! Fun Fair is a GO !

I am extremely pleased to be able to report that FunFair is going ahead. **Lorna Palmer** and **Penny Harfield** have volunteered to undertake FunFair this year. They are starting a little late, however I am confident that Blackburn residents will make the extra effort needed to support them and make this year's event as successful as those in the past. You can find more specific information in this BANAR.

On a more negative note were two recent developments related to our Youth initiative. A youth dance had to be cancelled (without notice) because the reserved school had not notified it's staff in advance, and they were unwilling to make last minute accommodation. In addition, our regular Teen Drop-In facilities are being withdrawn without apparent reason, or notice. Hopefully these issues can be resolved positively, however both of these episodes reflect a lack of consideration and respect for our youth. It is not difficult to understand our young people's occasional frustration when they receive treatment such as this from the adult community.

Also disappointing was the necessity of cancelling the March Break Day Camp planned, for the first time, last month. Unfortunately there was insufficient enrollment to support going ahead. This was an option requested many times in the past, and the BCA was quite surprised at the result. If you have any comments or questions, please feel free to contact Colleen Stimpson.

Bob Temison



SALLY & MICKEY WALKER
SALES REPRESENTATIVES
RES. - 824-4332



Goldleaf Realty Inc.
5335 Canotek Road
Ottawa, Ontario K1J 9L4
Business (613) 749-2121
Fax (613) 749-0808

FULL TIME REAL ESTATE AGENTS

21 YEARS OF COMBINED REAL ESTATE EXPERIENCE

RESIDENTS OF THE HAMLET FOR THE PAST 22 YEARS

CALL US ANYTIME FOR YOUR REAL ESTATE NEEDS

1400, place Blair Place
 P.O. Box / C.P. 8333
 Gloucester, Ontario K1G 3V5
 (613) 748-4119
 Fax: (613) 748-0235

ED CAMPBELL
 Councillor / Conseiller



Gloucester

Your Councillor's Report

Leisure Services

Once again we are having a study on this topic, conducted by the Gloucester Recreation Centre Board (G.R.C.B.). This time the Recreation Associations and the local Recreation Centre Board will be represented in the deliberations. Those parts of the community who are concerned with the delivery system will participate in this activity.

There have been two previous tries. In 1986 a report was prepared by a group which made a number of recommendations to change the present structure. It would have been a different system, but I was never convinced that it would have been better.

In 1990-91 another effort, directed this time by the G.R.C.B., resulted in a report to Council which would have resulted in a more centrally operated system. The Recreation Associations and the local R.C.B.s, as well as others, were virtually unanimous in opposition. It moved much of the control of the recreation system to the City's Recreation Department and most felt that the role of the volunteer was negatively affected.

It remains to be seen what will be the outcome of this study. We have to be careful dismantling a system which works. Making it more central will likely make it more expensive. At the same time, it is clear that recreational needs are changing.

The City did cut the per capita grants this year. I do not believe that this was the thing to do, but it mirrors the concern that grant money be used in an optimum fashion.

Drop-in Centre

City Council did approve a \$5,000. grant for the Blackburn drop-in centre. The Social Services Advisory Committee did recommend it, but they did not have the funds in their budget. I want to thank Councillor Fiona Faucher for seconding my motion and Councillors Bryden, Clark, Cauley and Danis for their support.

The problems facing this community, this City and other cities, are not rooted in the lack of drop-in centres and will not be easily resolved, but when a community makes the effort to find solutions to problems it should be supported. This is a worthwhile initiative which not only benefits our young people but, at the same time, demonstrates the need for the City, the Police and the community to work together. Yours truly,

Ed Campbell
 Councillor-Ward 3

BHRCB BRIEF

In the last issue of the BANAR we highlighted the meaning of the letters BHRCB.

The Blackburn Hamlet Recreation Centre Board

We mentioned that we are a group of Blackburn volunteers who:

- set the tax rate you are charged for recreation facilities in Blackburn;
- authorize payments and control the budgets for 10 local parks;
- approve new additions, improvements and general services for Blackburn parks;
- operate and are financially accountable for Bearbrook Pool;
- are responsible for the general quality, variety and level of care of recreation facilities, leisure areas, and green space in Blackburn.

In the last BANAR we issued a challenge: *(name the 10 Blackburn parks cared for by the BHRCB.)*

How did you do? The parks are:

- | | | | |
|------------------|----------------|------------------|------------------|
| - Centre Park | - Diceman Park | - Bearbrook Park | - Bush Park |
| - Red Maple Park | - South Park | - Keystone Park | - Orient Park |
| | | - Tauvette Park | - Woodhill Park. |

In addition to these parks, we also maintain lease agreements for the use of park space in local school yards. The BHRCB works in cooperation with local schools and school boards to maintain (and develop) parks at:

- | | | |
|----------------------|----------------------------|-----------------------|
| - Blackburn School | - Emily Carr Middle School | - Glen Ogilvie School |
| - Ste. Marie School. | | |

The committee has been active and has initiated an ambitious list of activities for the coming year. In addition to general maintenance activities, we have approved the installation of some additional lighting in Centre Park and Orient Park and have funded the installation of a water fountain for the tennis clubhouse. We will continue to provide superior ball diamonds for local leagues and are anxious to our first full season with the entirely refurbished Tauvette Park. We are currently involved in developing new master plans for Bearbrook Park, Diceman Park, Keystone Park and Orient Park. Watch for further activity updates in future BANARs.

PARK AVENUE *(In this part of our monthly column, we'll review one of the ten local parks or school yards.)*

The first review goes to our flagship park: **BEARBROOK PARK.**

Residents of Blackburn who can recall Bearbrook Park as it was when the subdivision was being developed have memories of quite a different space. Many dedicated individuals (over many years) have transformed a rough field and woods into an attractive recreation space serving a variety of leisure choices. Truck loads of sand, old telephone posts and some wire mesh (and many hours of volunteer toil) provided new community children with the first large ball diamond. Bearbrook Park began to take shape. In addition to taxation, the first (and many subsequent) Fun Fairs provided support to allow a swimming pool to be added and further development to occur.

The park continued to grow and develop with the addition of facilities as time (and mostly money) would permit. The park now provides: acres of well maintained grassed, knolled and treed areas and paved, lighted walkways; Gloucester's only outdoor public wading and swimming pool (which doubles for recreational curling in the winter), adjacent pool building and grassy lounge area; a partly fenced regulation little league ball diamond, six fully lighted tennis courts and clubhouse building; a lighted permanent outdoor rink for ice and ball hockey, ringette, broomball, lacrosse, basketball and other uses; a heated, wooden change and storage hut; a large play structure and sand box; large board games such as checkers, snakes and ladders and backgammon; and a frisbee golf course. *(For the structured games, go to the front desk at the pool during the summer for necessary supplies.)*

We are always looking for **interested** participants! New committee members are welcome and special (short term) contributions are also greatly appreciated. Think of something that you might be able to contribute to the effort of this group of volunteers - get involved! If you have comments about our community parks and facilities, please address them to Linda Gloss, Secretary, Blackburn Hamlet Recreation Centre Board, c/o 79 Westpark Dr., Gloucester, K1B 3G4.

In the next issue of the BANAR, we'll introduce other members of our committee, highlight some of our activities and review another of our local parks. See you then!

Varicose Veins

At least 40% of the population suffers from varicose veins, but most people are unaware of what treatment is available. Varicose veins are more than a cosmetic problem; they usually also cause leg fatigue, heaviness, aching, itching, or burning. In more serious cases, they can cause superficial phlebitis (inflammation of the veins of the legs), leg swelling, and skin ulcers.

Varicose veins are veins that have become stretched and no longer have normal valves to prevent the backflow of blood. They may appear as a network of blue lines, or as bulging blue cords. "Spider" veins are small, dilated vessels called capillaries. They appear as tiny purplish-blue threads, usually on the outer thigh or behind the knee.

Since the major cause of varicose veins is hereditary, it is difficult to prevent them. Their progression can be slowed by frequent walking, jogging, cycling, or swimming. Elevating the legs will help take the load off the veins. Avoid excessive heat (including hot tubs and saunas), standing or sitting for long periods of time, and tight pants or girdles.

Medically correct graduated support hosiery (available as stockings, knee-highs, or socks) are available in a range of colours and are quite sheer. They slow the formation of varicose veins, and can eliminate the discomfort of varicose veins that are already present. In *graduated* support hose, the pressure is greatest around the ankle and decreases through the calf and thigh. "Support hose" that are purchased in department stores usually provide the same pressure along the entire leg and this can actually make varicose veins worse! Parke Davis, Jobst, and Ibici, are excellent brands of support hose and are available at pharmacies. Some insurance plans reimburse the cost of graduated support hose, when they are prescribed for medical reasons.

There are two options for eliminating varicose veins: surgery or sclerotherapy. Surgery is required when the long or short-saphenous vein has become varicose. All other veins can be treated with sclerotherapy. Sclerotherapy involves multiple injections into the varicose veins, during several visits to the specialist's office. The cost to the patient varies from \$25 to \$40 per session and the average number of visits is about eight. Treatment of large varicose veins by sclerotherapy is currently paid for by OHIP. Your family doctor can refer you to one of the several good sclerotherapy clinics in Ottawa.

Dr. Louise Linney
824-1666
2559 Innes Road, Blackburn Hamlet



ANN HARRIS
Sales Representative
824-3141 (Res.)



CENTURY 21 GOLDLEAF REALTY INC.
5335 Canotek Rd., Ottawa

749-2121

Call Me At My Home In The Hamlet
824-3141, Or My Office 749-2121
FOR NO OBLIGATION REAL ESTATE ADVICE!





Join our circle!

The NEWCOMERS' Club welcomes all ladies of the Hamlet to join in on our fellowship. We have 70 members so far this year and there is room for more. If you join the club now, your \$7. membership fee will include the September 1992 to June 1993 year also.

The next meeting will be held on Monday April 27th in the Glen Ogilvie Public School library beginning at 7:30 p.m. Please mark your calendar and NOTE THE CHANGE OF DATE ... NEWCOMERS' usually meet on the third Monday of the month but April 20th is an Easter holiday and the school is closed.

Come and join us at our April meeting. The guest speaker will be from the Gloucester Police Department and the theme will be "PROTECTION FOR WOMEN". At half time, coffee, tea and sweets will be provided but please bring your own cup.

Also, note that the school will be closed on the third Monday in May for the Victoria Day holiday. Our meeting will be held the following Monday, May 25th.

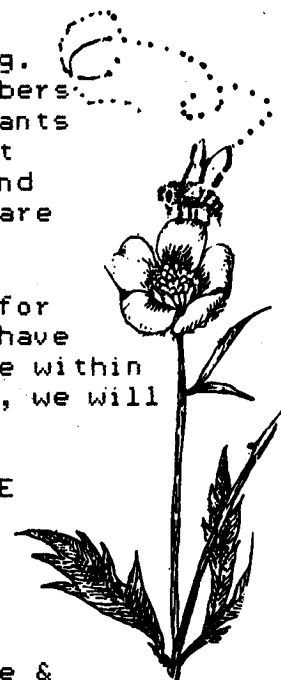
NOW, is the time to start preparing for the May meeting. We will be featuring our annual "Plant Exchange." Members are asked to bring their left over flower or tomato plants to exchange with someone else who might have a few left over pepper plants, etc. ! Bring along any perennial and border plants you may have thinned out. House plants are great to exchange too.

Also, at the May meeting, the induction of "Officers" for 1992/93 will take place and we hope that members will have volunteered for at least one of the many jobs available within the Club. Don't forget, if all members do their share, we will have another great Club next year.

All ladies in the Hamlet are welcome to JOIN OUR CIRCLE whether new in the community or a well established resident.

The smaller groups within the club meet at various times, the Reading Group; Baby-Sitting Co-op; Craft Group; "Luncheon Bunch"; the Hospitality Group; Culture & Gardening Group; THE WHO'S; and, the Couples Group.

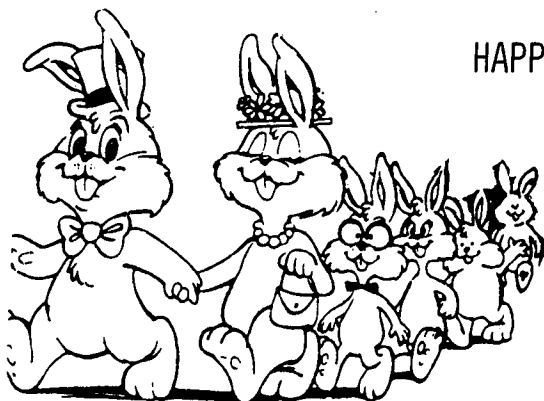
For more information about the NEWCOMERS' CLUB and how you can become a part of it, please phone President Edda Brown at 837-2183 (after 5:30 pm), Ann Price at 824-9783 or Brenda Cairncross at 830-5859.





PROPERTY MANAGEMENT
WITH THE PERSONAL TOUCH

P.O. Box 346, Orleans, Ontario K1C 1S7
Tel/Fax (613) 834-7236 Pager (613) 788-0599
4/92



HAPPY EASTER

FROM
THE
BANAR

BANAR DEADLINE

MAY 1

Pine View Child Care Centre



1627 Maxime, off
Cyrville near Innis
Tel: 744-KIDS

Safe, secure, surrounded by Love.
Easy access to communities of Blackburn
Hamlet, Pineview and Beacon Hill.
Toddlers, Pre-School, K.G., and Nursery
Programs. Very modern Centre with Caring Staff.
A.M. - P.M., Full Days, split week.
Open Year round 7 a.m. - 6 p.m.
Transport available. We welcome your visit.

6/92

Dr. Anil Sharma
Dr. Louise Linney
Dr. Kathryn McFarland

announce new hours for their

Family Medicine Clinic

9AM-9PM	Monday-Thursday	2559 Innes Road
9AM-4PM	Friday	Blackburn Hamlet
9:30AM-12:30 PM	Saturday Walk-In Clinic	(just west of Bearbrook)

824-1666

Currently accepting new patients

FÊTE FORAINE DE , BLACKBURN FUN FAIR

Long time residents of Blackburn Hamlet know that with Spring comes the planning for Fun Fair, held each year on the first weekend in June. This year the fair will be held on June 5 and 6 and the theme will be CANADA 125.

This year's Directors are:

Coordinators	Penny Harfield	830-1365
	Lorna Palmer	830-1678
Entertainment	Sandy McCoy	830-9295
Facilities	Paul Harris	830-4447
Fair Features	Katie Robillard	837-0769
Finance/Treasurer	Nancy Sunstrum	824-0519
Food	Candace Bouchard	837-1247
Fund Raising	Ted Guilliver	830-3384
General Store	Elizabeth Shergold	837-4950
Midway	Janet Erdeg	824-6611
Parade	Wendy Mihalicz	830-9494
Publicity	Chris Brett	830-2576
Secretary	Joanne Chapeskie	837-8931

Volunteers are always welcome and are needed. Please contact Penny Harfield or Lorna Palmer if you would like to help. A quilt is being prepared by one group of volunteers and will be raffled off during the fair!

Blackburn Hamlet's Fun Fair is an annual event designed to provide a fun time for families, at relatively low cost, and to raise money for groups in the Hamlet. The fair is held in the Hamlet at Emily Carr School grounds and Bearbrook Park. The events on Friday will include a Parade, Entertainment in the Park, Teen Dance and Fireworks. Saturday's events include a Midway, Pony Rides, Children's Races, General Store and an Adult Dance.

Contests

Four contests for children will be associated with this year's Fun Fair: (1) the Logo Contest (to choose a design for souvenir buttons), (2) the Colouring Contest, (3) the Poster Contest and (4) the BANAR Cover Contest.

Details of the Logo/Button Contest appear on the next page. The winning logo will appear in the June BANAR.

The drawing for the Colouring Contest, sponsored by Blackburn Toy and Hobby, will appear in the May issue of the BANAR.

BANAR Cover Contest

Entries for the June BANAR cover, which must incorporate this year's theme, should be submitted to the BANAR Editor by May 1, 1992. Kids, start drawing!!!

General Store

Once again Fun Fair will have a General Store, a place to relax and purchase some bargains. The store will again feature the perennial favourites, including the Plant Table, Book Table, Bake Table, White Elephant Table, Craft Table and Donut Corner. Contributions are needed: the drop off locations will be announced in the May BANAR.

Logo/Button Contest Rules

1. The theme for the 1992 Fun Fair is "CANADA 125".
2. The purpose of the contest is to give children (Grades 1-5) resident in the Hamlet or attending participating Blackburn Hamlet elementary schools the chance to design a visual representation of the theme for use on souvenir buttons.
3. Submissions should be on an 8 1/2 x 11 piece of blank paper. The design should be in the form of a circle (see below) in sufficient size to be understood, with the theme of the fair as shown in the picture, and coloured the way the final design should appear. The student's name, address, school, and phone number should be on the back.
4. Entries must be submitted by April 23, 1992 to either 14 Diceman Cres. or 33 Woodhill Cres.
5. The Fun Fair Directors will select the winning entry and their decision is final. They reserve the right not to select a winner. No entries will be returned.
6. The winning button will be published in the BANAR with the name of the winner. The winner will receive 15 free souvenir buttons and \$15.00 worth of Fun Fair tickets.



EXAMPLE SIZE ONLY-
DRAWING CAN BE LARGER TO
FULLY ILLUSTRATE WORDING
SHOWN IN EXAMPLE

FÊTE FORAINE DE
BLACKBURN
FUNFAIR

1st BLACKBURN SCOUT GROUP

BEAVERS

CUBS

SCOUTS

VENTURERS

BEAVERS

CUBS

SCOUTS

VENTURER'

The end of winter and start of spring finds all members of the Scouting family busy.

The three banquets held during Scout Week were well attended. Beavers were entertained by George's Magic Show. At the Cub Banquet Medallions were awarded to the cubs that had earned their five stars. Medallion recipients were: Owl Pack - Adam Lovell, Derek Harris, Jordan Miller, Kenneth Nicks, Andrew Parent, Andrew Poulin, Robbie Smith, Geoffrey Townsend; Hawk Pack - David Duncan, Matthew Newcombe, Daniel Guay, Nick Fehr; Fox Pack - Collin Linton, David Brock, Steven Lavergne, Michel Lagueux, Tristan Hannington.

The Beaver Colonies have been busy. Colony A plans a beach party, a visit to the Fire Station, a visit to Mer Bleu, and an Environment Night. Colony B's plans for April include a visit by Gloucester Police on bike safety and a visit from Gloucester Hydro. Colony C had a beach night and sports night, visited the IGA, and the train station, and in April expects a visit from the Gloucester Police on bike safety. Colony D visited Hamlet Donuts and in April will have a talk on bike safety by the Gloucester Police. Seven year old boys in all of the Colonies have received their Thunderbolts to add to their white tails and will have pre-swimup visits to Cub Packs.

In March Cubs in all three packs made their own Kub Kars, wooden cars designed for racing on tracks. All three cub packs scheduled their own Kub Kar Rally, with the tri-pack Kub Kar Rally Scheduled for Thursday, April 2 at Glen Ogilvie School.

In February Scouts visited Gloucester City Hall to fulfill a requirement for the Citizen badge. The highlight of the month was a trick bicycle demonstration for the Scout Troop. In March, in preparation for canoe training, the Scouts listened to a talk on hypothermia, and studied canoeing. Water training starts in April with two visits to the Rockcliffe Armed Forces Pool. In May the scouts expect to be canoeing the Rideau River.

Scouts are planning for the next jamboree - CJ'93, to be held during July 1993 in Kananaskis Country, Alberta. Scouts and senior boys in Cubs who are coming up to Scouts, can attend.

The Venturers are continuing with their badge work and plans for a CPR course and fire fighting course.

The Scout Bottle drive will take place in April after Easter. Please donate your bottles to help the Scouting movement.

In February the Scouting movement presented the BCA with a 25 year award for sponsoring Scouting. While Scouting started in Blackburn in 1954, the 25 year award is a recent introduction.

Blackburn Hamlet Preschool Inc.

Parents interested in having their children attend the Blackburn Hamlet Preschool are reminded that registration for the 1992-93 school year began in February and programs are filling up quickly. The Preschool offers two and three half-day programs, in either mornings or afternoons for children aged two and a half to five years. Appointments must be made to view the school and to receive registration forms. To arrange a visit, please make an appointment by calling Marni Gibson at 834-0924. Questions regarding the operation of the preschool can be addressed to the Director, Phyllis Frost, at 824-3251 after 1 pm.

How to "streetproof" our children at a level appropriate for their age is of concern to all parents. At the end of February, the Preschool offered an information session to parents and the general public on how to streetproof your preschooler. The presentation was given by a member of the Gloucester Police Force at the end of a regular Preschool business meeting where parents are invited to participate in the running of their childrens' school.

During the month of March, children at the Preschool had activities that centred around the topic of pets. Spring is in the air and as April starts, Spring and Easter activities will keep the children busy. There will also be a trip to see the RCMP Band.

Private and Semi-Private Tennis Lessons For Beginners, Novices and Intermediates

45 minutes of one-on-one tennis instruction: Only \$12.00
or
sign up with a partner or partners:
Group of two \$7.50 each
Group of three or more \$6.50 each

Instructor: Phil du Plessis 824-2671
(National Coaching Association of Canada, Level I Theory)

For more information ask for Phil at the
tennis registration or at the tennis club: 824-0002
(after May 9)

n.p. 4/92

ESTHETICS by LIZ

Complete Esthetics Services
with experienced
Esthetician/Aromatherapist

APRIL SPECIAL

FREE

Reflexology Treatment
with a PEDICURE

\$25

142 Pagé N.

837-7027

GLOUCESTER COMMUNITY CONCERT BAND

1992 Spring Concert

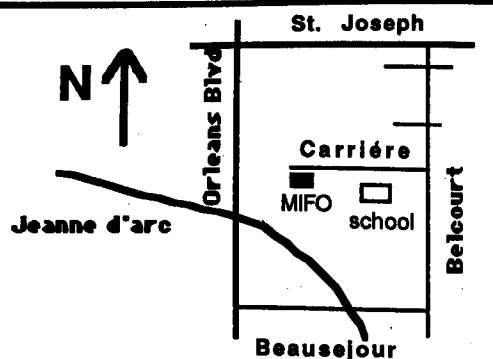
7:30 pm Wednesday, April 22, 1992

at

M.I.F.O

6600 Carrière Street, Orléans

\$4 per person Children 10 & younger free



4/92

Is the *Banar* Recyclable?

Recently, the *Banar* received a letter from Melissa Lonoce, 13, a Blackburn Hamlet resident, who asked if the *Banar* is "recyclable" in our curbside blue box program, and if it is, why this is not stated on the cover? Regular readers of this column will recall that I've discussed the whole notion of recyclability and non-recyclability of products and materials, so the question of the recyclability of the *Banar* is a good one.

The blue box program supplied to Hamlet residents by the City of Gloucester accepts three primary materials: newsprint, beverage and food cans, and glass bottles and jars. These materials have been selected for collection for more reasons than can be listed here, but simply put, because of their large numbers in the "average" household garbage stream and the ability to sell the materials for recycling. Thus, the paper the *Banar* is printed on *is not* one of the materials acceptable in the Blue Box program which has been established by the City and Laidlaw Waste Systems, the hauler responsible for the curbside sorting, collection and partial processing of the materials. If the City wished to collect the kind of paper the *Banar* is printed on, or any other material for that matter, it could pay the hauler to do so. In our present system, the cost is borne by the taxpayer. In short, Melissa, the *Banar* is not recyclable in our blue box program.

The *Banar*, though, is printed on recycled paper. In addressing the environment, the *Banar* has helped to "close the loop" in the lifecycle of paper recycling. Because it is printed on recycled paper, the *Banar* is acting as a "market" for recycling, helping to make it work. Recycling cannot work if there is no demand for products that contain recycled material. Our printer, Beauregard Printers, assures us that the publication you are holding contains;

- 50 % de-inked, recycled paper of which 40 % is post-commercial (e.g., from scrap paper and off-cuts from printers) and 10 % is post-consumer (e.g., from the federal government's Paper Save office paper recycling program).

Therefore, it carries Environment Canada's *Eco Logo*[™] program designation as an *environmentally friendly* product.

The *Banar* is not only made from recycled material, but it is recyclable if collected through an established fine, or office, paper recycling program. If possible, *Banar* readers who participate in office paper recycling programs should check to see if the paper is acceptable in their workplace programs, and deposit the *Banar* there for recycling.

Thank you for the question, Melissa, and we encourage and welcome others to write as well.

Jim Campbell

*To be considered *recyclable*, a material should meet two criteria: #1) The technology must be available to allow the material to be processed into a form of new material for new, reused, or reconstituted products; and #2) There must be the infrastructure necessary for the collection and processing of the product in the locale in which the product is distributed.



BLACKBURN ARMS MEN'S SOCCER LEAGUE REGISTRATION

APRIL 4 & APRIL 11
11:00am TO 2:00pm

REGISTRATION FEE: \$35.00

BLACKBURN ARMS PUB
2586 INNES RD.

PLAYERS MUST BE 25 YEARS OF AGE OR OLDER \ 18 GAME SCHEDULE PLAYED ON SATURDAYS
THIS IS A FUN NON-COMPETITIVE LEAGUE



Le Club Optimiste de Blackburn Hamlet

Gloucester, Ontario

Le Club Optimiste de Blackburn Hamlet célèbre, cette année, son dixième anniversaire. Nous voulons profiter de l'occasion pour remercier la communauté de Blackburn Hamlet de son appui.

Grâce à cet appui, le Club a pu organiser et soutenir un club "Disons non" à la drogue, des rodéos en bicyclette, des concours d'art oratoire et d'essai littéraire ainsi que des semaines d'appréciation de la jeunesse et de respect de la Loi pour les jeunes de Blackburn Hamlet. Vos dons ont aussi permis d'aider les enfants défavorisés du secteur à l'occasion de Noël et, suite à des requêtes particulières, ils nous ont aussi permis de soutenir les mal entendants, les scouts et les guides, Opération Retour au foyer et le Snowsuit Fund.

Puissions-nous continuer à compter sur votre appui dans l'avenir.

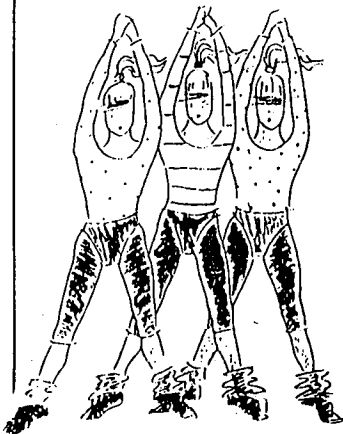
The Blackburn Hamlet Optimist Club celebrates its tenth anniversary this year. The Club would like to take this opportunity to thank the Blackburn Hamlet residents for their support.

Thank you for enabling the Club to organize and maintain a "Just Say No to Drugs" club, bicycle rodeos, public speaking and writing contests, Youth Appreciation and Respect for the Law Weeks for the youth of Blackburn Hamlet. Your donations have also enabled the Club to help the area's underprivileged children at Christmas and, in particular circumstances, to donate to the Canadian Hearing Society, the Boy Scouts and Girl Guides, Operation Go Home and the Snowsuit Fund.

May we count of your continued support in the years to come.

Le Président,

André Odeh
President



DO SOMETHING SPECIAL FOR YOURSELF

JOIN

JAN'S WORKOUT

for

A SAFE, WELL-BALANCED FITNESS PROGRAM

AT THE STUDIO 2580 INNES ROAD (ABOVE BECKER'S) QUALIFIED INSTRUCTORS, BRING YOUR FRIENDS & NEIGHBORS FOR A FUN WORKOUT. FOR FURTHER INFORMATION PLEASE CONTACT JAN QUINN AT 749-0911 OR LORNA LYTTLE AT 824-3564,

KINDER FUN AND FITNESS

GYMNASTICS-CREATIVE MOVEMENT-GAMES-FITNESS ACTIVITIES FOR 4 & 5 YEAR OLDS. 10 WEEK SESSIONS ON TUESDAY AND THURSDAYS FROM 1:30 TO 2:30 P.M. FOR FURTHER INFORMATION CONTACT JAN QUINN AT 749-0911

GLOUCESTER ALLOTMENT GARDEN ASSOCIATION

NEWS RELEASE

GARDEN FEVER

Springtime... Planting time.... A wonderful opportunity to partake of the virtues and pleasures of gardening when nature is awakening and everyone feels in tune with down-to-earth thrills.

Gardening can be a great sport to keep you in shape or a typical family activity in which all members can participate according to their capacity or particular liking.

Longer daylight hours work magically on nature and gardeners alike. Tomato and pepper plants growing in a southern window are a sure sign that spring is just around the corner.

Preparing flats is a good start, but the layout of your vegetable garden is just as important. A scale map locating your vegetables can be very useful, especially jogging your memory after the seeds are in the ground.

If space is scarce around the house, don't give up this thrilling opportunity. The Gloucester Allotment Garden Association is offering garden plots at both Orient Park and Anderson Road sites. Plots are full 7x14 meters and service includes tillage, water supply throughout the season, and a front-loader scoopful of mushroom compost. Fee is minimal since the Association is a non-profit organization.

For more information, call the registrar at 830-6821 or the Chairman at 824-6524. Hurry while plots are still available.

MATCHED LETTERS

Another way of writing in a secret code is to make the following chart.

a	b	c	d	e	f	g	h	i	j	k	l	m
z	y	x	w	v	u	t	s	r	q	p	o	n

Now, whatever message you want to send, use the opposite letter.

See if you can decipher these sentences.

1. R olev nb wlt.
2. Orggov Qzxp Slimvi hzg rm xlimvi.
3. Gsrh rh z hvxivg nvhhxtv.

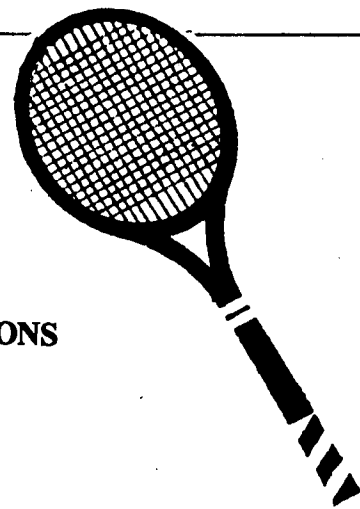
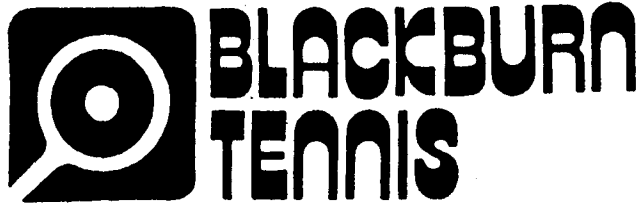
MESSAGES CODES

On peut rédiger un message secret en composant un code comme celui-ci:

Utilisez la lettre opposée à celle qui devrait se trouver dans les mots contenus à l'intérieur de votre message codé.

Voyons si vous sauriez déchiffrer ces messages:

1. Q'zrny nlm xszg.
2. Fmv srllmwvooov mv uzrg jzh ov kirmgvnkh.
3. Xvvr vhg fm nvhhztv hvxivg.



REGISTRATION FOR CLUB MEMBERSHIP AND LESSONS

GLEN OGILVIE PUBLIC SCHOOL

Saturday, April 25 and Saturday, May 9, 1992

9:00 a.m. to 12:00 noon

EARLY BIRD SPECIALS AVAILABLE ON THESE DAYS ONLY

<u>Fees</u>	<u>Family</u>	<u>Couple</u>	<u>Single</u>	<u>Junior</u> (18 & under)	<u>Senior Citizen</u> (65 & over)
Early Bird Special	85.00	70.00	45.00	25.00	25.00
Regular	90.00	75.00	50.00	30.00	30.00

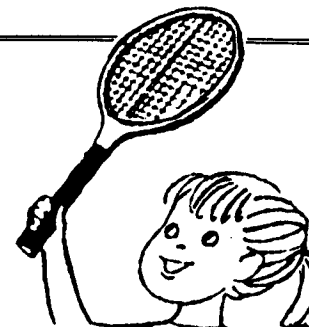
NOTE:

- The above fees are for Blackburn Hamlet BCA members.
- Non-Hamlet residents (N/R), add \$10.00.
- Families with more than four (4) adults (over 18), add \$10.00 for each additional member.
- Ask about our week-day and Thursday evening social round robins, women's city league and N.C.T.A. leagues.

LESSONS -- EXPERIENCED TENNIS INSTRUCTORS

• DAY PROGRAMS: JUNIOR TENNIS SCHOOL (9-14 YEARS)

SESSIONS	July 6-17; July 20-31; August 10-21
TIMES	12-1 p.m.; 1-2 p.m.; 2-3 p.m.
FEE	\$42.00 per session



• EVENING PROGRAMS: YOUTH AND ADULT LESSONS (Coordinator: Phil du Plessis, 824-2671)

	<u>YOUTH</u>	<u>ADULTS</u>
PROGRAM	Four 45 min. sessions (basic tennis strokes, drills, etc.)	Six one-hour sessions (basic strokes game situations, etc.)
SCHEDULE	Monday or Wednesday Choice of: 5:15 - 6:00 p.m.; or 6:00 - 6:45 p.m.	Monday and Wednesday Choice of: 6:45 - 7:45 p.m.; 7:45 - 8:45 p.m.; or 8:45 - 9:45 p.m.
	ONCE PER WEEK	TWICE WEEKLY
FEE	\$22.00	\$38.00

- **PRIVATE LESSONS:** Available for all levels of play. Ask at registration.

REGISTER EARLY -- FIRST COME, FIRST SERVED

1992-93

CLASSIFIED

HANDYMAN AVAILABLE: If it needs refinishing, repairing, painting, papering, building, or installing, call Bob at 830-1343 evenings (a Hamlet Homeowner) 5/92

TEXTILE DECOR: Full decorating service, custom bed and window coverings, blinds and upholstery. Hourly consultations. Call Cynthia Hoisak 830-5706 or 837-7798. 6/92

EUROPEAN HANDYMAN: Painting, wallpapering, drywall, plastering, ceramic tiles, general carpentry, sundecks, plumbing, basement finishing. Repairs and renovations. Quality work, free estimates, call Vladimir 834-1779. 5/92

GATEKEEPER PROPERTY MANAGEMENT: Renting, Managing and Maintaining your property in Ottawa's East End. Professional, reliable and reasonable, call 830-4225 or 560-3701. 5/92

SPRING IS COMING! It's time to arrange for major or minor home improvements. Small renovation company will do renovations, kitchens, bathrooms Basements, additions and more. Fully insured, senior discounts. For your free estimate call Pat 446-4870 Pager 598-6349 leave message. 5/92

"JACK'S" electric hot water tanks and appliances servicing reasonable rates. Call 745-3672. 5/92

KIDS ONLY - a new clothing line for children. 100% cotton, reasonably priced, room to grow, easy to care for, durable and fun! Find out how to order at a discount! Call Siobhan 834-7714. 5/92

LEIGH MORGAN FASHIONS - Clothing line for women, reasonably priced, easy care, for a free catalogue, call Bev Moore at 834-1188. 5/92-

SEWING LESSONS: Classes for ages 6 and up, featuring "Kids can Sew" methods and patterns. Enrollment limited, call now 824-9540.

COMPUTER WOES? Call Computech today for a complete assessment of your computer requirements sales, upgrades, service. 824-1987.6/92-

WANTED TO RENT: 3-4 bedroom single home, Blackburn Hamlet, for 2 years from Aug. 1992 call 830-9305.4/92

NEW BRUNSWICK: Cottage for rent weekly in summer, private beach, warm salt water, in quiet area near Shediac and Parlee Beach. One hour or less to P.E.I. ferry, national parks, Hopewell Rocks, Magnetic Hill, waterslide parks, seafood restaurants, golf courses. Call 837-6524.4/92

EXPECTING A BABY? Attend Welcome Wagon's Baby Shower. Interesting talks and demonstrations on baby health, safety and care. Free gifts and lots of door prizes. The shower will be 12 April, at 1:00 p.m. at eh Chimo Hotel. For your free invitation, please call Pippa 236-815, ex 01 4/92

ESTHETICS BY LIZ: Complete Esthetic Services in relaxed environment. Also: Aromatherapy (Massage with Essential Oils), Reflexology (Wholistic Foot Massage). Call Liz 837-7027

SCHOOLS

Blackburn Pre-School		824-3251
Blackburn Public School		824-1581
Cairine Wilson (9-13)		824-4411
Carleton Board Office		721-1820
Carleton Catholic Office		224-2222
Ecole Ste. Marie (K-6)		824-3600
Emily Carr Middle School (6-8)		824-5455
Glen Ogilvie School (K-5)		824-4014
Gloucester High School (9-13)		745-7176
Good Shepherd School (K-6)		824-4531
Louis Riel High School (9-13)		837-2216
Lester B. Pearson High School (7-13)		741-4525

GUIDES, SCOUTS, BROWNIES, BEAVERS, VENTURES & CUBS

Guides & Brownies	Ellen Philp	830-2981
	Sue Balint	824-6940
Registrar (Scouts)	Richard Manicom	830-3440
Beavers (5-7)	John Robinson	830-2456
Cubs (8-10)		
Scouts (11-14)	Brian Feagan	830-6677
Ventures (14-17)	Rick Aubrey	749-2628
Chairman Scouts	Ray Raoux	837-7723
Uniform Coordinator	Penny Brown	830-3440

MOUVEMENTS SCOUT-GUIDES DE ST. CLAUDE

Louvetaux	Jean St. Louis	824-9856
Castors	Jean St. Louis	824-9856
Jeannettes	Nicole Andrecheck	824-9972
Guides	Vivianne Cote-Maxwell	837-1839

SPORTS

Badminton (Adults)	Ray du Plessis	824-2671
Badminton (Juniors)	Colleen Stimpson	837-8637
Softball (Girls)	Gary Polomark	824-7010
Bearbrook Pool	Christa Bennett	824-8300
Football	John Rowe	824-6665
Hockey (Boys)	Wayne Bissett	824-3938
Hockey (Mens)	Roy Van Koughnett	824-3921
Ringette (Girls)	Al West	830-1401
Ringette (Ladies)	Jane Ross	837-1585
Skating	Terry Measlip	824-3542
Soccer	Bob Cormie	830-2049
Softball (Mens)	Rick Sheasgreen	824-0607
Softball (Ladies)	Denise Mille	830-9706
Tennis	Ray du Plessis	824-2671
Volleyball (Ladies)	Mary Jane Luloff	830-2086
Cycling	Graham Burton	824-1057
BMX	Hedy Burton	824-1057
Hardball (Boys)	Ken Murray	824-8315
Splash Wavepool		748-4222
Blackburn Arena		824-5197
Blackburn Chorus	Peter Bowie	824-3434
Block Parents	Northeast/Doris Budd	824-1076
	Northwest/Susan Sheridan	824-8936
	South /Lynn Bissett	824-3938
City Gloucester Administration		748-4100
Library Blackburn Branch		824-6926
Newcomers Club	Edda Brown	837-2183
Neighborhood Watch	Donna Bond	824-1522
Information Gloucester		741-0770
Orleans Recreational Complex		748-4210
B.H. Recreation Ctr.Board	D.MacQuarrie	830-3901

BLACKBURN COMMUNITY ASSOCIATION BOARD OF DIRECTORS

PRESIDENT	Bob Jamieson	824-6879
SECRETARY	Michelle Therien	824-9293
TREASURER	Warren Hanstead	837-3219
MEMBERSHIP	Bob Jamieson	824-6879
CIVIC AFFAIRS	Steve Palmer	830-1678
SPORTS	Jim Canning	824-1104
DAY CAMP	Colleen Stimpson	837-8637
PUBLICITY	Joan Grier	834-1414
FUN FAIR	Penny Harfield	830-1365
	Lorna Palmer	830-1678
ENVIRONMENT	Jim Campbell	830-1620