

BANAR



IN FLANDERS FIELDS

In Flanders fields the poppies grow

Between the crosses, row on row

That mark our place; and in the sky

The larks, still bravely singing, fly

Scarce heard amid the guns below...



WE REMEMBER

NOVEMBER

1987

Blackburn**A**rea**N**ews**A**nd**R**eports

EDITOR: BEVERLY BRETT 52 Glen Park Drive 830-2576
ASST. EDITOR: KATHY BRAMWELL 122 Glen Park Drive 837-6018
LAY-OUT: BEVERLY BRETT
 KATHY BRAMWELL

TYPING: KATHY BRAMWELL

DISTRIBUTION:

The BANAR is published nine times each year: October, November, December/January, February, March, April, May, June, and a Summer issue which is distributed at the end of June. Residents or affiliated non-residents are invited to submit their views or information pertaining to activities within this community. Articles must be brief, legible (typed preferably) and free of copyrights (unless permission is granted). Illustrations must be of good quality. The EDITOR reserves the right to make changes when necessary. Original material will not be returned unless accompanied by a stamped, self-addressed envelope. Subscriptions available \$10.

THE BANAR DEADLINE IS THE FIRST DAY OF THE MONTH PRECEDING PUBLICATION.

COVER CONTEST

The BANAR is looking for art submissions for the front cover for the 1986/87 season. The themes are as follows:

October Thanksgiving, Hallowe'en
 November Grey Cup, Remembrance Day
 December Christmas
 February Valentine's Day
 March Winter Break, St. Patrick's Day, Easter
 April Spring
 Summer B.C.A. Day Camp
 (May and June covers are reserved)

The winners will receive \$20 plus publication of their submissions on the front cover. Names of all winners will appear in the same BANAR as their artwork.

CONTEST RULES

All submissions must be:
 - 8½" wide by 7½" long
 - black and white pen drawings only
 - received by the Editor by the first day of each month. (i.e. October submissions due on Sept.1, Nov.'s due on Oct.1 etc.)

The final selection is at the discretion of the editor.

All entries become the property of the BANAR and will not be returned unless accompanied by a stamped, self-addressed envelope. This contest is open to residents of Blackburn Hamlet only.

ADVERTISING POLICY

The BANAR will accept commercial ads on a camera-ready basis only. The BANAR Staff will not be responsible for designing ads or making changes in current ads. Payment for the ads must be received by the editor by the BANAR deadline. Make cheques payable to Blackburn Community Association.

BANAR RATES

| | |
|--------------|----------|
| Full Page | \$150.00 |
| Half Page | \$ 80.00 |
| Quarter Page | \$ 45.00 |
| Eighth Page | \$ 25.00 |

For further details call the Editor at 830-2576.

WINNER

Congratulations to Tim McCarthy, age 13, of 12 Wedgewood Cr. Tim's drawing is the front cover of this month's BANAR. A cheque for \$20.00 is in the mail to Tim. Well done Tim!

EDITORIAL

As Editor of the BANAR I get many phone calls and one of the most frequently asked questions is 'When is the next deadline?' The deadline is always the first of the month preceding publication. I would like to explain a little bit about the production of the BANAR.

The BANAR is usually delivered on the last weekend of the month. The printers need eight to ten working days to print the BANAR. That leaves us with approximately two weeks to put it all together. The typing takes three to four days as does the lay-out. My job is, accordingly, much easier if material submitted for publication is on time!

We not only have printing deadlines to consider, we have our families. Anyone who has visited my house or called no doubt already knows that I have two charming children; Kathy, my steadfast assistant, is blessed with three. We have to schedule our work on the BANAR around our families, doing most of the lay-out in the evenings. Our schedules are tight and although it may not seem like a big request to squeeze in some last minute typing or make some changes in the lay-out it is not always possible. I commit a certain number of hours each month to BANAR business but beyond that, I make no promises. With two kids spilling juice in the kitchen, I can't just dash down and re-arrange pages to insert a last minute item.

We do try to be flexible. My policy is if we can do it, we will. If we can't, it will have to wait until next month.

I hope you understand.

Now if I can just get this to the typist....

Beverly

The BANAR is looking for art submissions for the front cover for the December issue. The theme for December is Christmas.

YOUR ALDERMAN'S REPORT

Francon Quarry:

Concerns have been expressed over the years about the operations of the quarry. The blasting, noise, dust and road conditions have been problems which have bothered us in varying degrees.

In early September I met with officials from Francon, including the President and local manager, along with members of City and Regional staffs to review some of these concerns.

In regard to noise, they will attempt to address specific concerns. There have been examples of disturbing noises which have been regulated and new ones will be addressed. If there are specific concerns, tell Francon or let me know.

The road conditions have been examined. They feel that they try to keep the entrances and exits on Bearbrook cleaned and I have noticed degrees of improvement. They use flushing equipment which cleans and also reduces dust, but it causes a problem as it creates some of the muddy conditions which are particularly noticed by cyclists. The need to maintain clean roads was emphasized. The housekeeping can be improved.

The Region is looking at the traffic patterns, including acceleration lanes. The City also has a responsibility where road violations occur, although we face the usual problem of not being able to station police on any road constantly.

I believe that we must realize that Francon has been here a long time and will likely be with us for years to come. At the same time Francon has a responsibility to the people in the area. Whether it likes it or not, it is next to a major residential area.

I expect to be meeting with some of the officials again in the near future. I will continue to monitor problems and seek solutions where I can.

Ed Campbell
Alderman - Gloucester Centre
824-2560

ST. CHRISTOPHER'S NURSERY SCHOOL

20th Anniversary Reunion 1967-1987

All students - past and present - , parents, volunteers, friends and guests are cordially invited to celebrate our 20th anniversary with us.

An Open House and tea will be held on Sunday, November 8, 1987 at 2 p.m. in St. Christopher's Anglican Church, 24 Steel Street (south-east of Blair and Montreal Roads).

For further information, please, call the school at 745-7698.

A few spaces are still available in our afternoon programs (1 to 5 afternoons/week). For information, please, call 745-7698, 830-1108 or 837-2037.

NEWS FROM THE 170TH BROWNIE PACK

The 170th Brownie Pack has started a new year. This Year the 23rd and 170th Packs have joined together. We welcome back all our returning brownies from the 23rd and 170th Packs plus Alicia Murphy and Elizabeth Craig. Joining us are four Tweenies: Kristen Todd, Angela Giddings, Nicola Rostek, and Slyvie Lamouline-Boyd.

We are looking forward to a happy and busy year with all our Brownies.

Collette Fletcher

**BANAR
DEADLINE**

NOVEMBER 1

JUNIOR BADMINTON

The 1987-88 season has started. New members are welcome - ages 10 to 17.

PLACE : Glen Ogilvie School Gym

TIMES : Fridays : 6:15 p.m. - 7:45 p.m.
Ages 10 - 13

Saturdays : 9:00 a.m. - 12 Noon
Ages 10 - 13 and 14 - 17

We are still looking for a volunteer supervisor (no experience necessary) in order to start a Tuesday evening group (ages 14 - 17).

New members wishing to join should complete the registration form below and show up at one of the playing times.

For more information, call Al Hlady at 824-3754.

REGISTRATION FORM 1987-88

Name : _____

Address : _____

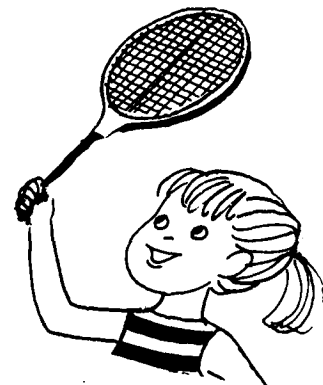
Telephone : _____

Date of Birth : _____

BCA # : _____

BCA Member (\$8.00) _____

Non-member (\$28.00) _____



Letters to the Editor

Dear Editor:

Re: Blackburn Hamlet Bypass

Readers who are not too worried about how their taxes are spent should turn to your next feature. Those who are concerned, however, with value for money are invited to read the following paragraphs.

1. It no longer makes sense to invest a vast sum of money in a tight bypass of Blackburn Hamlet; the regional study of June 1980, which is the basis of the present proposal, is technically incomplete and no longer acceptably relevant. What is needed is a new and thorough cost/benefit analysis of alternatives identified today.
2. A look at the map shows that a tight bypass of Blackburn Hamlet will do absolutely nothing to provide the ever increasing numbers of people living in the Orleans area and further East with better access to other parts of the capital region. A tight bypass is so obviously a non-solution that one can only marvel why some local decision-makers favour it.
3. One may attribute advocacy of this tight bypass to the following phenomena, all too often present when individuals push for large expenditures. First, someone else is paying the bill; in this case, it is the Province of Ontario that is supposed to make available the millions of dollars in question. Second, no-one advocating the expenditure lives in the area to be adversely affected. Third, advocates are not aware of all the facts; during the last year how many advocates of a tight bypass have actually walked the proposed routing to find out for themselves the likely impact? Finally, those in favour of a large expenditure are not too concerned with negative aspects, since they expect to have moved on to other responsibilities by the time the project is finally completed, leaving someone else to face the flak.
4. The 1980 study is no longer a suitable basis for determining whether or not a major expenditure should go ahead. It estimated the cost of a tight two-lane bypass (Alternative B) at five million 1979 dollars. But one should be talking about 1989 dollars and about a four-lane bypass. Given inflation and other increases, one can expect the eventual bill for taxpayers to be at least fifteen million dollars, and this does not even include costs, such as that of destroying roughly seventy-five acres of land; the costs of maintenance are another matter altogether, and must also be taken into account.
5. The accepted way of assessing a major expenditure is to compare all the likely costs and benefits during the economic lifetime of the project (and not just the initial capital outlays), and of all feasible alternatives. There are, admittedly, difficulties in quantifying some benefits and costs, but the advances since 1979 in the techniques used considerably reduce the area of subjective interpretation. Once one has calculated the net present values of the various alternatives, one can calculate the internal rates of return. Usually, a project is not worth financing unless its internal rate of return is at least 10%. The 1980 study does not contain a proper cost/benefit analysis or even allude to internal rates of return.

Letters to the Editor cont'd.....

6. Another major criticism of the 1980 study is its failure to include a survey of the origin and destination of commuters residing in the Orleans area and further East, why they are using Innes Road, and why they are using their cars. (Here one must point out that the vast majority of vehicles passing through Innes during peak hours are cars, usually with only one occupant). It appears that some kind of O and D work took place in 1985, but it seems to fall far short of what is necessary. The importance of a genuine, rather than simulated, O and D survey is obvious. Perhaps a majority of commuters are not going to the down-town area or are unhappy with the existing bus service. If so, a tight bypass is not going to help much; instead, it might be more sound to invest in extending the bus network and improving service. Furthermore, the more the number of people commuting to and from the work places in the Southern part of the region, the more convenient will be a bypass routing much wider than the present tight proposal.

7. Again, the 1980 study deserves to be criticised for its lack of community involvement. No-one from the community was included in the select group of people who made the crucial decisions in terms of weighing the various factors at stake. Who better, however, to judge the relative importance of, say, traffic service, community impact, recreation, cost etcetera than those who would have to live with the consequences? Incidentally, one of the surprising aspects of this whole question has been the inadequate consultation with the residents of Blackburn Hamlet; on one occasion the community did, however, make clear what it wanted; this wish was originally accepted by Gloucester Council, which nevertheless eventually backtracked in the face of NCC opposition. The Council did not seek community approval before reversing itself.

8. Finally, the 1980 study seems irrelevant. It is now clear that the transportation problems of the region can only be solved sensibly by preparing a coherent regional plan. There is no point in removing one bottleneck, if the result is the creation of another one in the near vicinity. Again, a major Southern link road is now necessary to allow rapid connections from the East and West to the South. A final important change in the East is the dismantling of the CPR railtrack, which frees up a new alternative routing for a Blackburn Hamlet bypass. The combination of existing roads (Mer Blue and Fourth Line) and the abandoned railtrack seems a better routing than the proposed tight bypass; it would mean minimal destruction of land in the Greenbelt, no disruption of several hundred residences in Blackburn Hamlet, minor inconvenience for through traffic, and less cost to taxpayers.

What should readers do? First, make their views known to members of Gloucester Council and of the Regional Municipality of Ottawa-Carleton, and to our M.P.P. Second, exercise more care in deciding whom to vote for when the next municipal elections take place.

Yours sincerely,



William Bain



CITY NEWS

Gloucester

FROM THE MAYOR'S OFFICE

Just a note to pass on some information concerning bus service in Blackburn Hamlet.

Due to some changes in the OC Transpo bus routes, the residents of Blackburn Hamlet might have perceived a marginal reduction in the number of trips on route 25 since 1984. I would like to point out, however, that this coincided with the introduction of a new route 42 in the south end of the community. The latter route currently has 11 a.m. trips and 12 p.m. trips on its winter schedule. There is thus considerably more service in the Blackburn Hamlet area today than there was several years ago.

Residents in the north end of the community have slightly fewer trips to choose from on route 25 but the number of people using this route has declined because of the growth in the use of route 42.

Harry Allen
Mayor



Ottawa Service
Battalion

Recruiting Information

2870 Ottawa Service Battalion Cadet Corps
Arthur M. TURTLE, Commanding Officer - 728-7458
Young persons between the ages of 13 (as of December 31st) and 18 can sign up for this citizenship and leadership training which includes outdoor and summer paid camps, as well as general military training (e.g. first aid, fieldcraft, drill, adventure training). Registrations are accepted anytime. There are no fees; cadets are paid a training bonus to attend summer camps.

Tuesdays : EAST END
Gloucester High School
2060 Ogilvie Rd. Gloucester
Cafeteria-reception area
Beacon Hill / Orleans

**BANAR
DEADLINE**

NOV. 1

BLACKBURN & GLEN OGILVIE
GIRL GUIDES



You're Invited to come to our

BAZAAR



ARR SCHOOL

NOVEMBER 14th

4 p.m.

WANT TABLE

LE

BLES

F

CRAFTS



SCOUTING IN BLACKBURN

A new season has begun for the Blackburn Hamlet Scouting organizations. Because there was no pre-registration last spring, there may have been some boys who missed the September 14th registration at Emily Carr. New boys will be welcomed in all levels - with open arms if one or more parents is prepared to serve as leader or occasional volunteer - just telephone the appropriate coordinator listed in the Telephone Directory elsewhere in this issue.

Beavers: Four colonies of Beavers will again function in the Hamlet this year, with about 85 boys registered. This program for boys aged 5 to 7 is now over 15 years old in Canada and provides an excellent introduction for this age level to group activities and aims and programs of the Scouting movement.

Cubs: Last year's five Cub packs have consolidated this year into four, but with about the same number of boys registered. Deer and Eagle packs have become Wolf pack and can be found at Emily Carr on Monday nights. Monday is also the meeting night for Bluejay and Fox packs, while Owl meets on Thursdays. Additional leaders would be especially welcomed by Owl pack Akela, Donna Bond.

Scouts: Scout registrations are up in both troupes but new recruits are still welcome. Last spring, Blackburn Scouts were extremely well represented at the National Capital Region Chief Scout Awards. Four boys from 'A' troupe and nine boys from 'B' received this prestigious honour at Laurentian High School last May 29th. Congratulations, all of you!



1ST BLACKBURN CHIEF SCOUTS
1987

back: G. Kneen, J. Fisher,
I. Mace, S. Aubrey,
G. Scorsone
front: S. Raoux, J. Henderson,
A. Burton, C. Skinner
absent: D. Raoux,
B. Stewart, G. Webb,
S. Bennett

Venturers: Registration night in September saw the greatest percentage increase in this group - 28 (including two girls) have registered in the two companies (an increase of 700% from 1985/86 and about 100% from September 1986). Both groups are busy planning weekend fall activities, including hiking, orienteering and computer/movie sleepovers.

The 1st Blackburn Scouts thank the residents and merchants of the Hamlet for their support at Apple Day and for other fund-raising activities, such as bottle drives throughout the year.

Barbara Aubrey
P.R. Coordinator

G GLOUCESTER SOCCER

Three Blackburn Boys on Championship Soccer Team

On Saturday, September 26 our Blackburn boys, fullback Michael Erdeg, forward Joey Hoffer and goalie Jason Weber along with their Gloucester Hornets Division II teammates stung Gatineau 1-0 to win the Ottawa-Carleton Soccer League Atom B Cup.

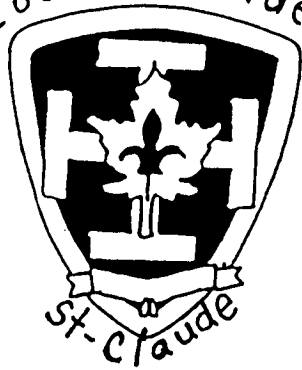
FRONT : (from left to right) MICHAEL ERDEG, NICOLAS ANSTIS, MARC-ANDRÉ DAOUST, JASON WEBER, JEFFREY GARBY, ERICH POTVIN, ROBBIE McNAMARA.

SECOND : SUNEIL SASTRI, MARC CINANNI, JOEL HEBERT, JOEY HOFFER, STEPHEN POWELL, KYLIE SWARTMEN, MARTIN BOYLE.

BACK : HAROLD HOFFER assistant coach, IAN POWELL, coach



Scouts + Guides



CUEILLETTE DE BOUTEILLES DE BOTTLE DRIVE



November 7 novembre

starting at :

à compter de :

9:30 a.m.

Organisé par :
Organised by :

Castors

Louveteaux

Jeannettes

P.S. Afin de ne pas vous déranger, veuillez laisser vos bouteilles sur le perron. Merci!

Please leave your bottles on your doorsteps, This way we won't bother you! Thank you!

SCOUTS - GUIDES DE ST-CLAUDE

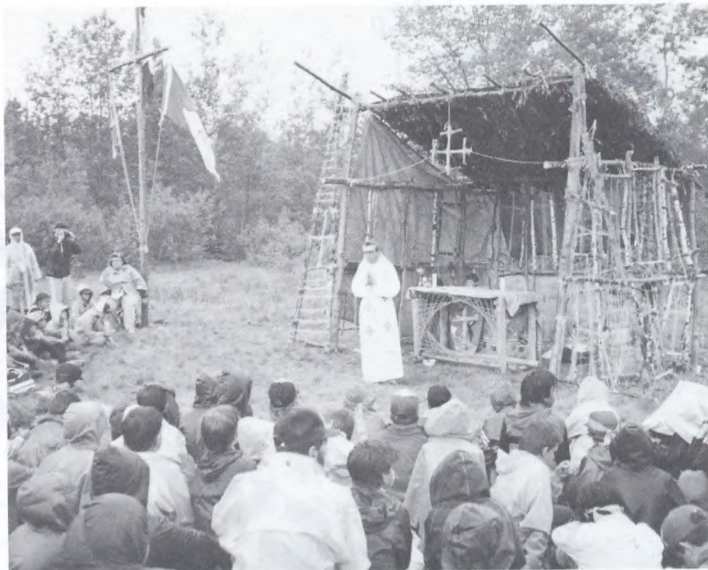


Le 2 août dernier, les Jeannettes de la 29^e Ronde St-Claude se rendaient au lac Viceroy pour une semaine de cantonnement. Notre thème cette année était: 'Jamboree Indien'. Quatre tribus se rencontraient pour fraterniser. Nous avons eu une semaine épatante. Nos braves indiennes ont même voté pour faire l'excursion malgré la pluie. Quelle expérience!!! Nous avons aussi fait des bricolages indiens, appris des chants indiens, dégusté des mets indiens. La semaine s'est terminée par un grand POW WOW avec remise des honneurs. Sincère merci à mes aides précieuses: Nicole Andrecheck, Viviane Côté-Maxwell, Josée Michaud et aussi à nos deux super-cuisinières, Raymonde Marcoux et Francine Brouillard. Maintenant je ne peux pas attendre pour commencer une autre année fantastique.

Louise Lagroix
Cheftaine
29^e Ronde St-Claude
Blackburn Hamlet



Lors d'une rencontre au camp Mowgli, le 29-31 mai dernier, la meute de louveteaux de la 39^e St-Claude s'est bien amusée et a pu échanger avec d'autres louveteaux des différents secteurs du district. Cette rencontre eut lieu au terrain scout AWACAMENJ MINO où au-delà de 300 jeunes garçons se rassemblaient pour une fin de semaine remplie de jeux et d'une grande course à la découverte.



Les événements se couronnaient par une messe en plein air animée autour d'un autel en bois construit par les pionniers et les louveteaux.

Le camp d'été, ayant un thème indien, eut lieu le 12-18 juillet où la meute a vécu une semaine des plus formidables. Le camp débuta par une olympiade avec la participation des parents. Les jeux, les bricolages, les excursions et les animations des feux de camp ont permis aux louveteaux de jouir d'une expérience inoubliable. Les animateurs louveteaux souhaitent la bienvenue aux louveteaux ainsi qu'à leurs amis durant la nouvelle saison qui débutera cet automne.

Maîtrise
39^e St-Claude
Blackburn Hamlet

Salon **The Image**
\$5.00 Off
highlights, perms & streaks.

Nov. 15-30

2053 Meadowbrook
745-7396

Early Christmas Special

Newcomers' Club

Join our circle!



WELCOME TO THE BLACKBURN NEWCOMERS' CLUB:

The Blackburn Newcomers Club is an informal ladies' social group whose main goal is to welcome newcomers and established residents who wish to make new acquaintances. Various social activities are planned for the upcoming year.

Our calendar for 1987-88:

- Sept. - Mix & Meet
- Oct. - Wine & Cheese
- Nov. - Xmas craft & wrapping
- Dec. - Xmas dinner
- Jan. - New Year shape up
- Feb. - Pot Luck dinner
- Mar. - Bowling night
- Apr. - TBA
- May - TBA
- June - Closing dinner

The General Meetings are held at Glen Ogilvie School, 8:00 p.m. third Monday of each month. The annual membership is \$7.00. First General Meeting is September 21, 1987. A warm invitation is extended to all residents. Your support would be an addition to our circle, your ideas and experience welcomed.

Anyone interested in joining the Club or requiring further information please call Collette Fletcher at 824-7241.



BLACKBURN TENNIS

TENNIS NEWS

The Annual Blackburn Tennis Tournament was held in September.

The results are as follows:

LADIES SINGLES : Sue French over Lucie Cyr
6-3
7-5

LADIES DOUBLES : Hiroko Barnes and Sue French
over
Lucie Cyr and Jo-ann
D'Alfonso
6-2
6-1

MENS SINGLES : John Wall over Francois Cyr
6-2
6-1

MENS DOUBLES : John Wall and Michael
Pulcheny over Scott Hatfield
and Francois Cyr
6-3
5-7
6-3

MIXED DOUBLES : Francois & Lucie Cyr
vs
John Wall & Lori Bergman
MATCH YET TO BE PLAYED

THE MICRO DIET by uni-vite

A fast, safe, effective, medically tested weight loss program

LA MICRO-DIÈTE par "uni-vite"
Un régime d'amaigrissement médicalement éprouvé rapide,
sécuritaire et efficace.

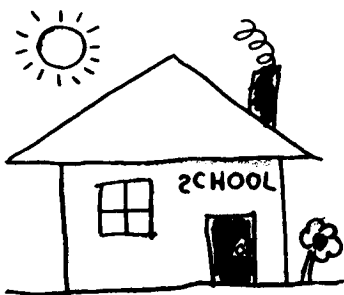
For further details call:

Jeanne Major

Pour de plus amples
renseignements appelez:

830-4997





Blackburn Hamlet Preschool Inc.

Children get a lot out of our preschool program but what's most interesting - parents do too. Being part of a cooperative preschool program means you get involved. By assisting the teacher on duty days and by being members of various committees that administer the school, you become part of a rich, learning experience. You give your children an opportunity to enrich their young lives and, at the same time, you gain a better understanding of how to meet the needs of the 2 1/2 to 5 year old age group that attends our school.

There's Still Time to Sign Up

Programs are currently offered two or three half days per week, in either the morning or the afternoon. There are still a few openings available. For complete details please contact the parent registrar, Valerie Case at 830-5165 or the Director, Phyllis Frost at the school, 824-3251.

The Ins and Outs

As well as the many activities, crafts and organized play that are part of the daily program, the kids look forward to special outings which are scheduled throughout the year. Our upcoming field trips include a visit to Patterson's Berry Farm to investigate Charlie Brown's Pumpkin Patch.

Art activities and outdoor play are planned in advance and follow a variety of themes. The focus at this time of the year is on the beauty of autumn. Children will enjoy apple and vegetable (in season of course) painting and they will learn how to make crepe paper apples.

Give a Bear a Hug

One event that has been immensely popular with our kids in Teddy Bear Week. Each child gets a chance to show off his or her favorite teddy to all their new friends at the preschool.

What is Block Parenting

For the benefit of our preschool parents, we have invited the Gloucester Police to visit and discuss Block Parenting. It's a great opportunity to find out how Block Parenting can be put to effective use in your neighbourhood.

Just Toying Around

Another event for the parents that the kids will later appreciate is our much acclaimed Toy Party. It was such a success last year that we have decided to hold a second Toy Party on Wednesday, November 4th at the Blackburn Hamlet Preschool. Synder Distributing will present an intriguing display of the latest toys, books and puzzles for kids up to the age of ten. These carefully selected toys are of excellent value and quality; great for Christmas gifts. You can purchase toys that evening or place an order if a particular item is sold out. Bring a friend and come early.

We're a busy, happy place for you and your child to be. Welcome to Blackburn Hamlet Preschool.

Chris Kline Lemieux



BANAR DEADLINE

THE NEXT ISSUE OF THE BANAR WILL BE DISTRIBUTED ON NOVEMBER 28th. THIS WILL BE THE CHRISTMAS ISSUE AND NO BANAR WILL BE DELIVERED AGAIN UNTIL JANUARY 23rd. THE DEADLINE FOR THE DECEMBER BANAR IS: NOVEMBER 1ST

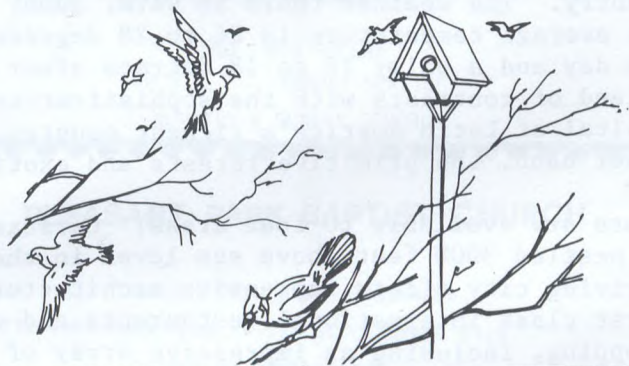
GLOUCESTER CENTRE FOR COMMUNITY RESOURCES

Monday and Tuesday evening, November 16 & 17
6:30 p.m. - 9:30 p.m.

HEARTSAVER BABY

An infant-child CPR course which will require participation at 2 evening sessions. Fee \$8 (to cover cost of materials).

For more information please call the Centre at 741-6025.



Blackburn TOY & Hobby

INTRODUCTORY
OFFER ON



2670 Innes Road
837-2347
Blackburn Shoppes

REAL BABY - \$23.99
Clothes - \$ 9.99

"ALF" - \$29.99



playmobil®

* Win a Playmobile Esso Station *
* Draw November 28, 1987 *
* Name: _____ *
* Address: _____ *
* Phone: _____ *

Specials Valid until November 21, 1987
While quantities Last

TRAVEL TIME

The Farmers' Almanac predicts a long, cold winter and there is a definite chill in the October air. It's time to break out your long woolies and think about some hot spots for the winter of 87 and 88.

One such sun destination that Canadians have recently discovered is Venezuela. It has become very popular. Venezuela has more Caribbean coastline than any other country. The weather there is warm, sunny and tropical. The average temperature is 26 to 28 degrees Celsius during the day and a balmy 16 to 18 degrees after sunset. It's a land of contrasts with the sophistication of Caracas, capital of Latin America's richest country, and, on the other hand, the primitive forests and exotic wildlife.

Tours are available to four areas. Caracas, the capital, is nestled 3000 feet above sea level in the Andes. This thriving city offers impressive architecture, as well as first class international restaurants and nightclubs. Dazzling boutiques provide excellent shopping, including an impressive array of leather goods and gold jewellery. In the Caribe area - a 45 minute drive from downtown Caracas to the coast - many Venezuelans and some tourists enjoy an ocean playground. Puerto La Cruz, a charming resort town of 85,000, is a half hour from the city of Barcelona. Nearby is Doral Beach, a beach-side resort rapidly gaining popularity. For those who just want an opportunity to relax, Venezuela has its own Caribbean island, Isla Margarita. The island is a short twenty-five minute hop, by air, from Caracas.

You can combine your holiday in Venezuela and visit two of the above areas. Land tours are available to Angel Falls, the highest in the world and 15 times higher than Niagara Falls. A jungle tour by jeep along an old coast road takes you to a Creole village and into the jungle. The tour includes a refreshing stop by a river with a pool at the base of a waterfall for cooling off.

Another reason that Venezuela is a popular sun destination is that the buying power of our Canadian dollar is strong. A superb seafood dinner will cost you just \$7 and a great cup of coffee or a beer may be as little as 25 cents. An added bonus is that the tap water is safe to drink. A passport for Canadian citizens and a tourist card are all that are necessary to visit this land of friendly South Americans.

Laurie Hansen-Trip for Abacus Travel Services



Spoil yourself

SOUL FOOD



I AM THE BREAD OF LIFE . . .

GOOD SHEPHERD COMMUNITY

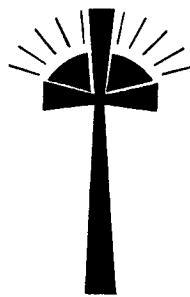
(Roman Catholic)

- RECTORY: 92 Bearbrook Road - 824-4394
 PARISH PRIEST: Father C. P. Herlihy, O.M.I.
 SUNDAY MASSES: Good Shepherd Catholic School
 101 Bearbrook Road
 7:00 p.m. (Saturday)
 9:15 & 11:00 a.m. (Sunday)
 WEEKDAY MASSES: In Rectory Chapel
 Tuesday 7:30 p.m.
 Wednesday to Friday 9:00 a.m.
 COMMUNION TO THE SICK: On request - please call Rectory.
 BAPTISMS: Call the Rectory one month ahead.
 SACRAMENT OF FORGIVENESS: Before Masses At School and any time at the Rectory, especially between 3:00 & 5:00 p.m. on Saturday.
 MARRIAGES: Please arrange with Parish Priest at least six months ahead.

PAROISSE ST-CLAUDE DE BLACKBURN

(catholique-romaine)

- PRESBYTERE 6, Promenade Southpark
 tél. 824-5350
 PRETRES-ADMINISTRATEUR M. L'Abbé Gaetan Charest
 LIEU DE CULTE EGLISE, 2599 CHEMIN INNES
 (autre entrée-Ecole Ste Marie,
 rue Southpark)
 MESSES DU DIMANCHE Sam. à 5.00 p.m.
 Dim. à 11.00 a.m.
 MESSES DE SEMAINE Lundi, mercredi, jeudi et vendredi
 à 5.00 p.m. (sauf avis contraire)
 BAPTEME Prévenir deux mois à l'avance et
 prévoir deux rencontres.
 CONFESION Avant les messes (sauf le dernier
 quart d'heure et sur demande)
 MARIAGE Prévenir 6 mois d'avance et pré-
 voir une session de préparation
 COMMUNION AUX MALADES sur demande
 ORGANISMES PAROISSIAUX Conseil de Pastorale, comites :
 liturgie, finances, aide-accueil,
 BIENVENUE AUX NOUVEAUX PAROISSIAUX - CONTACTEZ-NOUS!



I am the Resurrection and the Life!

RESURRECTION LUTHERAN CHURCH

A congregation of the
 Evangelical Lutheran Church
 in Canada (ELCiC)

CONVENT GLEN SCHOOL, Jeanne D'Arc
 Blvd and Fortune Drive, Orleans

SUNDAY SERVICE: 10:30 a.m.
 (Nursery available)
 SUNDAY SCHOOL: 10:30 a.m.

PASTOR: Craig Knight - 830-2043

BILBERRY CREEK BAPTIST CHURCH

at

Our Lady of Wisdom School

1565 ST. GEORGES ST.

REV. DON COLLAR

10 a.m. - SUNDAY SERVICE

NURSERY & SUNDAY SCHOOL

PLEASANT PARK BAPTIST CHURCH

414 Pleasant Park Road - 733-4886

(Pleasant Park Road is off St. Laurent Blvd.
 south of Smyth Road)

MINISTER: Rev. O. Stanley Swaren

SUNDAY SERVICE: 11:00 a.m. (Nursery & Junior Church
 Available)

CHURCH SCHOOL: 10:00 a.m. all ages

ROTHWELL UNITED CHURCH

42 Sumac Street, Cardinal Heights, 746-0820

SUNDAY SERVICE: 10:30 a.m.

CHURCH SCHOOL: 10:30 a.m.

(Nursery, Kindergarten, and Intermediate Departments in the
 Church; Primary and Junior Departments at Fairfield
 School)

MINISTER: Rev. Joanne Barr, M.A., M.Div., 833-2059

ST. MARY THE VIRGIN, BLACKBURN

(ANGLICAN)

NAVAN ROAD CHURCH (1 km from Innes intersection)

8:00 a.m. EUCHARIST SUNDAY

9:30 a.m. EUCHARIST WEDNESDAY

LOUIS RIEL SCHOOL

10:00 a.m. SUNDAY - FAMILY EUCHARIST: CHURCH SCHOOL,
 NURSERY, WHEELCHAIR ACCESSIBLE.

RECTOR: Rev. Donald J. Eustace, 2508 Autumn Hill Cres.,
 824-3795

WARDENS: Neil Stephens, 830-2394 - Cathy Thurlow, 824-0732

"Striving to know Christ, and to make Him known."

Soul Food

CONTINUED

GREENBELT BAPTIST CHURCH

Colonel By Secondary School in Beacon Hill North at:
2381 Ogilvie Road

SUNDAY: Family Bible Study 9:30 a.m.
Worship 10:55 a.m.
(Nursery available)
Fellowship Hour 7:00 p.m.

WEDNESDAY Bible Study groups meet in homes 8:00 p.m.

PASTOR Rev. Donald Akitt, 2536 Innes Road, 824-1183

GRACE PRESBYTERIAN CHURCH

Terry Fox Elementary School
6400 Jeanne D'Arc Blvd., Orleans

SERVICES: Sunday - 10:00 a.m. Sunday School for all ages
11:00 a.m. Worship
(Nursery provided throughout.)

For further information call: Gordon Kouwenberg 824-9260.
EVERYONE WELCOME



A Growing Church
For Growing People

at

444 St. Laurent Blvd.
(north of Montreal Road)

.11 a.m. - Sunday Service
.Church School and Nursery
.Midweek Activity - 745-1756
.Manor Park Preschool - 748-7671

Rev. Dr. James B. Sauer
Minister
745-1756

COMMUNITY PENTECOSTAL CHURCH

1963 St. Joseph Blvd. at Jeanne D'Arc Blvd.
ORLEANS, ONT. K1C 2E2

SUNDAY 10:00 a.m. Family Sunday School - All Ages
11:00 a.m. Morning Worship Service
6:30 p.m. Evening "New Life" Service
(Nursery and Children's Ministry -
ALL Services)

WEDNESDAY 7:00 - 8:30 p.m. Family Night
Nursery and Preschoolers... Babies- 4 yrs.
Kids Bible Club ... Ages 5-10 yrs.
Keen Teens Club ... Ages 11-12 yrs.
Bible Study and Sharing ... Adults

FRIDAY 7:30 p.m. Youth Night ... Ages 13 & up

PASTOR Rev. Bert K. Liira TELEPHONE 837-3555

ABIDING WORD EVANGELICAL LUTHERAN

Faithful to the Word of God
1575 Belcourt Boulevard, Orleans

SUNDAY SCHOOL AND BIBLE STUDY: 9:30 a.m.

SUNDAY WORSHIP SERVICE: 10:30 a.m.

PASTOR: Edward A. Spreeman

For more information, please phone: 824-2524

"LET EVERYTHING THAT HAS BREATH PRAISE THE LORD!"

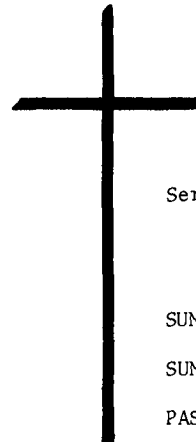


ORLEANS UNITED CHURCH

837-4321

Worship & Fellowship
Nursery & Sunday School
Sunday 10 a.m.
Garneau High School
Carrière off Belcourt

REV. TOM SHERWOOD



ST. JOHN EVANGELICAL LUTHERAN CHURCH

Serving the Ottawa area since 1895

270 Crichton Street
(At the end of the Vanier Parkway)

SUNDAY SCHOOL: 11:00 a.m.

SUNDAY WORSHIP: 10:00 a.m.

PASTOR: W. David Raths 749-6953



550 Codd's Rd.
AT MONTREAL RD.

WELCOME TO OUR VIBRANT GROWING CHURCH
PROVIDING MINISTRIES FOR ALL AGES

Pastor Roy Batchelor
Pastor Conrad Neudorf
744-0682 / 744-0688

9:45 A.M. SUNDAY SCHOOL
11:00 A.M. MORNING SERVICE
6:00 P.M. EVENING SERVICE

CLASSIFIED

BANAR DEADLINE-1st of each month

RATES: Ads of 20 words or less, \$1.00
Additional words, add 10¢ per word.

TO PLACE AN AD:

Count one word each for: name, telephone number, size, address, etc. Calculate cost of the ad for one issue. Place ad plus payment (make cheque payable to: Blackburn Community Association) in the mailbox of the Editor.

LOCKSMITH, Bonded. Residential security. Locks, window bars, fire/Burglary safes. Installations. Rekeying your new home, inexpensive security. Free estimates. 824-4371

SEASONAL TAILORING : Colour Analysis. A total Fashion Experience with Makeup and Wardrobe Planning. Wallet of fabric swatches included. Phone Mary 830-0156.

PROFESSIONAL CLEANER : Business or residential, bonded, insured, supplies & equipment provided, customized service, free estimates, discount to seniors. Call 837-4954.

TEACHER : Experienced in special education. Available to tutor elementary school children. Reasonable rates. Phone 830-1223.

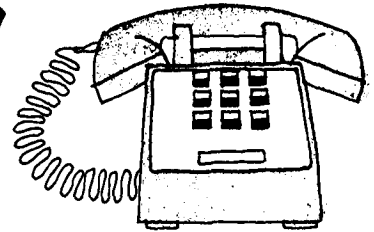
FOUND : Ladies watch. Found mid-September at Emily Carr School. Call 824-8771.

WANTED : Daily ride to and from General Hospital from Blackburn Hamlet. Phone Paula 830-4992.

FOR SALE : Red ringette jacket - Ladies size 36. Rarely worn, excellent condition. \$42. Call: Emmonds at 830-0316.

**BANAR
ADDRESS
52 GLEN PARK DR**

BLACKBURN TELEPHONE DIRECTORY



EMERGENCY

POLICE
FIRE

822-2916
741-1211

SCHOOLS

| | |
|--------------------------------|----------|
| BLACKBURN PUBLIC SCHOOL | 824-1581 |
| CAIRINE WILSON (9-13) | 824-4411 |
| CARLETON BOARD OFFICE | 820-1820 |
| CARLETON CATHOLIC OFFICE | 224-2222 |
| ECOLE STE. MARIE (K-6) | 824-3600 |
| EMILY CARR MIDDLE SCHOOL (6-8) | 824-5455 |
| GLEN OGILVIE SCHOOL (K-5) | 824-4014 |
| GLOUCESTER HIGH SCHOOL (9-13) | 745-7176 |
| GOOD SHEPHERD SCHOOL (K-6) | 824-4531 |
| LOUIS RIEL HIGH SCHOOL (9-13) | 837-2216 |

BROWNIES GUIDES SCOUTS

| | | |
|--|------------------|----------|
| GUIDES & BROWNIES | ELLEN PHILP | 830-2981 |
| | DONNA VASUDEV | 824-7522 |
| REGISTRAR (SCOUTS) | SHEILA FAURE | 824-8771 |
| BEAVERS (5-7 YRS) | KEVIN BLANK | 824-2748 |
| CUBS (8-10 YRS) | BRIAN HODGSON | 830-1814 |
| SCOUTS (11-14 YRS) | JIM SCORSONE | 824-1145 |
| | JERRY VILLENEUVE | 837-3713 |
| VENTURERS (14-17 YRS) | BENOIT ROBERT | 224-2273 |
| | RICK AUBREY | 749-2628 |
| ROVERS (18-23 YRS) | LARRY GROVER | 824-2226 |
| UNIFORM COORDINATOR(SCOUTS) | DENISE BELAND | 837-9322 |
| MOUVEMENTS SCOUTS-GUIDES DE ST. CLAUDE | | |
| LOUVETEAUX | MELODIE PARENT | 443-3834 |
| CASTORS | RACHEL MORGAN | 837-1881 |
| JEANNETTES | LOUISE LAGROIX | 824-4768 |

SPORTS

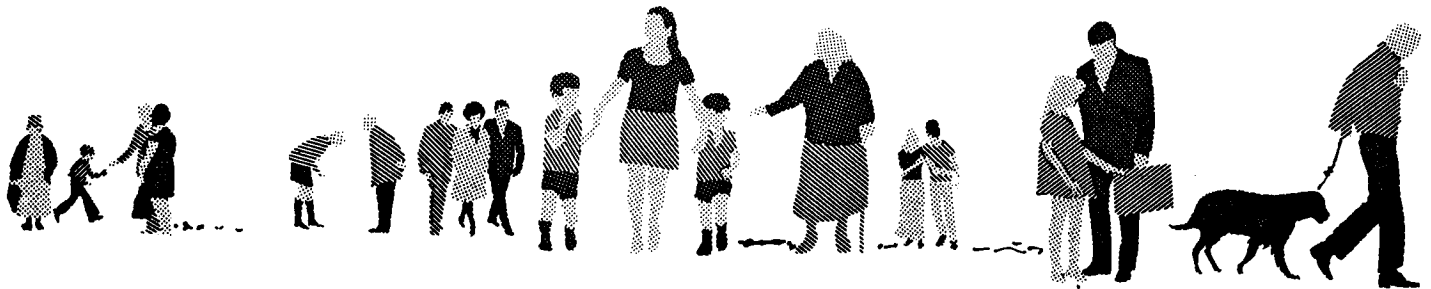
| | | |
|-------------------------|-------------------|----------|
| BADMINTON (ADULT) | ELIZABETH BURTON | 824-6715 |
| BADMINTON (JUNIORS) | AL HLADY | 824-3754 |
| BASEBALL (BOYS & GIRLS) | JIM CANNING | 824-1104 |
| BEARBROOK POOL | NICOLE FORGET | 824-8300 |
| FOOTBALL | NANCY HALL | 837-2425 |
| HOCKEY (BOYS) | WALLY WALKER | 824-0039 |
| HOCKEY (MEN) | ROY VAN KOUGHNETT | 824-3921 |
| RINGETTE (GIRLS) | DON CAMSELL | 824-7736 |
| RINGETTE (LADIES) | JANE ROSS | 837-1504 |
| SKATING | TERRY HEASLIP | 824-3542 |
| SOCCER | BOB CORMIER | 830-2049 |
| SOFTBALL (MEN) | JERRY STINSON | 824-3339 |
| SOFTBALL (WOMEN) | DENISE MILLER | 837-1585 |
| SWIMMING | | |
| TENNIS | RAY DU PLESSIS | 824-2671 |
| TENNIS COURTS | MONITOR | 824-0002 |
| VOLLEYBALL (LADIES) | | |
| CYCLING | GRAHAM BURTON | 824-1057 |
| B.M.X. | HEDY BURTON | 824-1057 |

MISCELLANEOUS

| | | |
|-----------------------------------|----------------|----------|
| BLACKBURN ARENA (GLENPARK DRIVE) | | 824-5197 |
| BLACKBURN DRUG MART | | 824-2257 |
| BLOCK PARENTS (NORTHEAST) | FRAN CORMIER | 824-1662 |
| (NORTHWEST) | NORMA MARCOTTE | 830-1109 |
| (SOUTH) | LYNN BISSETT | 824-3938 |
| CITY OF GLOUCESTER ADMINISTRATION | | 748-4100 |
| DAY CAMP | | |
| LIBRARY (GLENPARK DRIVE) | | 824-6926 |
| NEWCOMERS' CLUB | BETTY TROY | 830-0737 |
| NEIGHBOURHOOD WATCH | DONNA BOND | 824-1522 |
| ORLEANS SPORTS COMPLEX | | 837-1144 |
| BLACKBURN PRE-SCHOOL | | 824-6013 |
| INFORMATION GLOUCESTER | BEV REYNOLDS | 741-0770 |

COMMUNITY CALENDAR

| DATE | TIME | EVENT | PAGE # |
|----------|--------------------------|---|--------|
| NOV. 1 | | BANAR DEADLINE | |
| NOV. 4 | 8 P.M. | TOY PARTY - BLACKBURN HAMLET PRESCHOOL | 14 |
| NOV. 7-8 | 11-4 P.M. | GLOUCESTER CRAFTSMAN'S GUILD CHRISTMAS MARKET | 14 |
| NOV. 7 | STARTING AT 9:30 A.M. | ST. CLAUDE'S BOTTLE DRIVE | 11 |
| NOV. 8 | 2 P.M. | ST. CHRISTOPHER'S NURSERY SCHOOL OPEN HOUSE | 7 |
| NOV. 14 | 1-4 P.M. | GIRL GUIDES BAZAAR EMILY CARR | 8 |



association communautaire

BLACKBURN

community association

BOX
BOÎTE 8634, ALTA VISTA TERMINAL

• OTTAWA K1G 3T9, ONTARIO

THE B.C.A. DIRECTORS

| | | | | | | | |
|-----------------------------------|---|-----------------|----------|------------------|---|-------------------|----------|
| PRESIDENT | - | BOB MADILL | 824-9440 | SPORTS | - | JEFF PENNOCK | 830-1795 |
| 1st VICE | - | MARG MADDOCK | 824-2568 | YOUTH ACTIVITIES | - | | |
| 2nd VICE | - | | | SPECIAL PROJECTS | - | | |
| SECRETARY | - | SHEILA MUNROE | 830-4642 | PUBLICITY | - | | |
| TREASURER | - | WARREN HANSTEAD | 837-3219 | FUN FAIR '88 | - | | |
| MEMBERSHIP | - | KEN ZOMER | 824-1530 | EDUCATION | - | GLORIA-DAWN | 824-8914 |
| CIVIC AFFAIRS & TRANSPORTATION | - | BOB JAMIESON | 824-6879 | | | WARKENTIN-COULTER | |
| MAINTENANCE | - | ELDON KEMP | 824-2903 | | | | |